



## Cambridge International AS & A Level

CANDIDATE  
NAME

--

CENTRE  
NUMBER

--	--	--	--	--

CANDIDATE  
NUMBER

--	--	--	--

\* 5 7 1 2 5 0 5 2 0 7 \*



**MATHEMATICS**

**9709/12**

Paper 1 Pure Mathematics 1

**February/March 2021**

**1 hour 50 minutes**

You must answer on the question paper.

You will need: List of formulae (MF19)

### INSTRUCTIONS

- Answer **all** questions.
- Use a black or dark blue pen. You may use an HB pencil for any diagrams or graphs.
- Write your name, centre number and candidate number in the boxes at the top of the page.
- Write your answer to each question in the space provided.
- Do **not** use an erasable pen or correction fluid.
- Do **not** write on any bar codes.
- If additional space is needed, you should use the lined page at the end of this booklet; the question number or numbers must be clearly shown.
- You should use a calculator where appropriate.
- You must show all necessary working clearly; no marks will be given for unsupported answers from a calculator.
- Give non-exact numerical answers correct to 3 significant figures, or 1 decimal place for angles in degrees, unless a different level of accuracy is specified in the question.

### INFORMATION

- The total mark for this paper is 75.
- The number of marks for each question or part question is shown in brackets [ ].

This document has **20** pages. Any blank pages are indicated.

**BLANK PAGE**

- 1 (a) Find the first three terms in the expansion, in ascending powers of  $x$ , of  $(1 + x)^5$ . [1]

.....

.....

.....

.....

.....

.....

.....

- (b) Find the first three terms in the expansion, in ascending powers of  $x$ , of  $(1 - 2x)^6$ . [2]

.....

.....

.....

.....

.....

.....

.....

- (c) Hence find the coefficient of  $x^2$  in the expansion of  $(1 + x)^5(1 - 2x)^6$ . [2]

.....

.....

.....

.....

.....

.....

.....

.....

.....

.....

.....

.....

.....

.....

.....

.....

.....

.....

.....

.....

.....

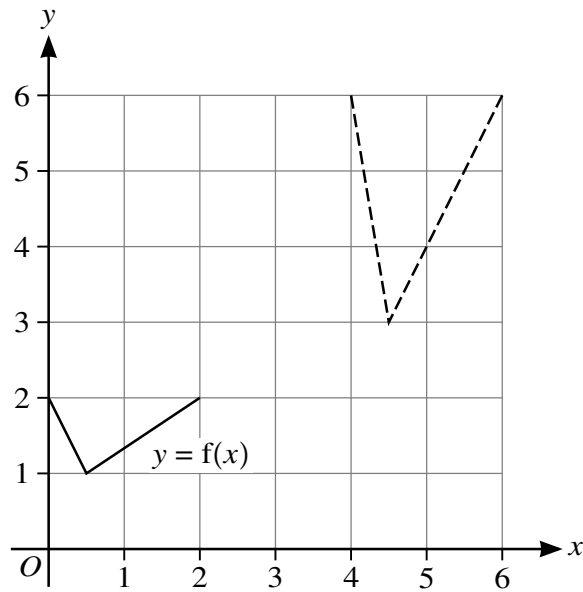
.....







5



In the diagram, the graph of  $y = f(x)$  is shown with solid lines. The graph shown with broken lines is a transformation of  $y = f(x)$ .

- (a) Describe fully the two single transformations of  $y = f(x)$  that have been combined to give the resulting transformation. [4]

.....

.....

.....

.....

.....

.....

.....

.....

.....

- (b) State in terms of  $y$ ,  $f$  and  $x$ , the equation of the graph shown with broken lines. [2]

.....

.....

.....

.....

.....









- (b) Find an expression for  $f^{-1}(x)$ . [2]

.....

.....

.....

.....

.....

.....

.....

.....

.....

.....

.....

.....

.....

.....

.....

.....

.....

.....

.....

.....

.....

.....

- (c) Solve the equation  $gf(x) = 13$ . [3]

.....

.....

.....

.....

.....

.....

.....

.....

.....

.....

.....

.....

.....

.....

.....

.....

.....

.....

.....

.....

.....

.....







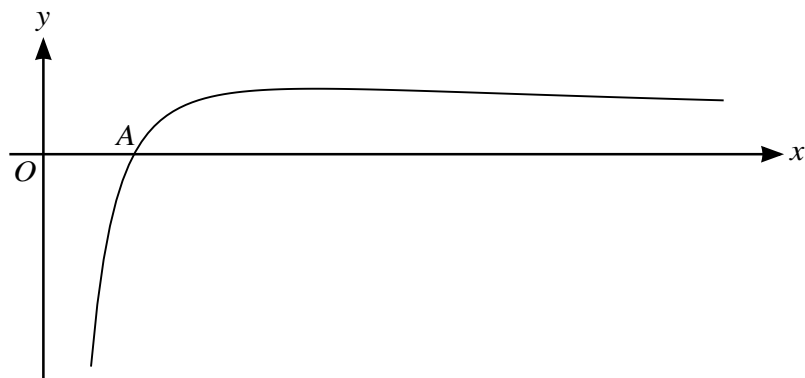








11



The diagram shows the curve with equation  $y = 9(x^{-\frac{1}{2}} - 4x^{-\frac{3}{2}})$ . The curve crosses the  $x$ -axis at the point  $A$ .

(a) Find the  $x$ -coordinate of  $A$ . [2]

.....

.....

.....

.....

.....

.....

.....

(b) Find the equation of the tangent to the curve at  $A$ . [4]

.....

.....

.....

.....

.....

.....

.....

.....

.....

.....



